

ST BOTOLPH

C A M B R I D G E

From the Priest in Charge

Dear Friends

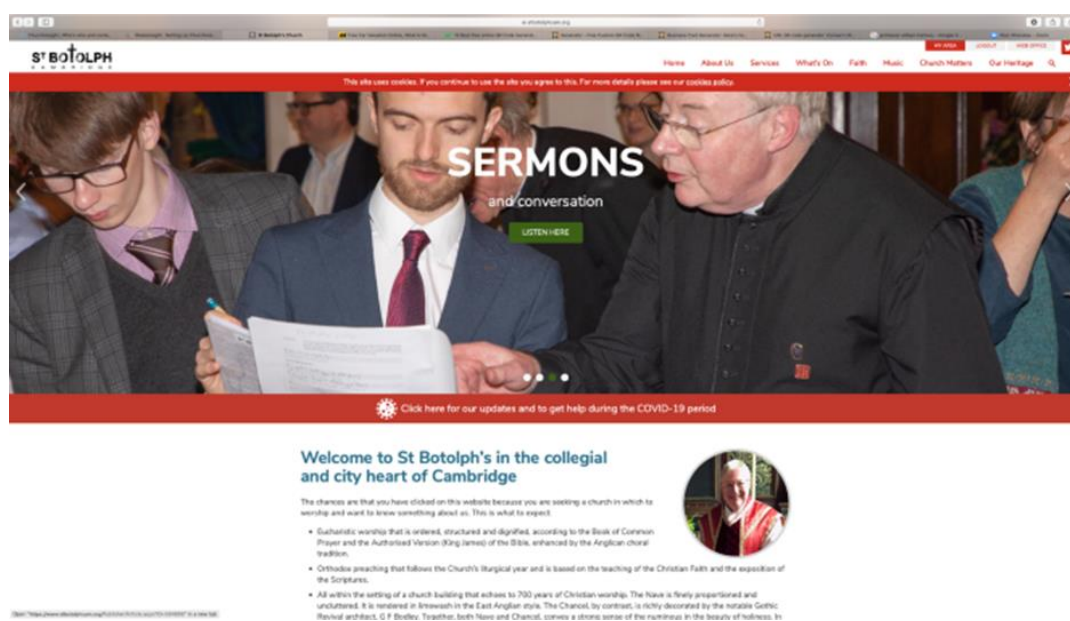
Newsletter 19

Welcome

While it has been wonderful to have many members of the wider Cambridge worshipping community join us for services over the past few months, our thoughts and prayers continue for all the members of our congregation who are not able to join us by virtue of self-isolation, distance or vulnerability. Several have been in touch to tell me that it is a great comfort to know that they are not forgotten, have been missed and prayed for, and look forward very much to returning, once a vaccine has been found and administered.

In the meantime, these next few weeks will be crucial to keeping the church open by our adherence to the restrictions regarding social distancing, sanitisation and the wearing of face masks. We hope and pray that the wider student community, now returning, will act responsibly both in their own interests, but for the wider Cambridge community also.

St Botolph's has a new website – www.stbotolphcam.org



ST BOTOLPH
C A M B R I D G E

Home About Us Services What's On Faith Music Church Notices Our Heritage

This site uses cookies. If you continue to use the site you agree to this. For more details please see our cookie policy.

SERMONS
and conversation
LISTEN HERE

Click here for our updates and to get help during the COVID-19 period

Welcome to St Botolph's in the collegial and city heart of Cambridge

The chances are that you have clicked on this website because you are seeking a church in which to worship and want to know something about us. This is what to expect:

- Catholic worship that is ordered, structured and dignified, according to the Book of Common Prayer and the Authorized Version (King James) of the Bible, enhanced by the Anglican choral tradition.
- Orthodox preaching that follows the Church's liturgical year and is based on the teaching of the Christian Faith and the exposition of the Scriptures.
- All within the setting of a church building that dates to 700 years of Christian worship. The Nave is finely proportioned and uncluttered. It is rendered in brickwork in the East Anglian style. The Chancel, by contrast, is richly decorated by the notable Gothic Revival architect, G F Bodley. Together, both Nave and Chancel, convey a strong sense of the numinous in the beauty of holiness. In

Launched just a couple of weeks ago after much hard work by David Eastwood and a small advisory group, the website has attracted many views in the space of two weeks. The *Our Services* page has had 400 views during this period, with the *About Us* and *Sermons* pages getting 250-300 views. Several of the Sermons have been downloaded many times.

The website is updated in real time with the church's Twitter feed, with regular updates by David as well to the *News*, *Sermons* and *Orders of Service* sections too. If you haven't seen it yet, do please have a look.

Dan Jones

I asked Dan to say something about himself for the Newsletter in advance of the Annual Meetings and here is what he wrote:

I've been an acting Deputy Churchwarden for nearly a year. It's been an unusual year for all of us, to say the least. St Botolph's has been something of a beacon of hope and optimism. From this Autumn, I would be very honoured to be elected to the post of Churchwarden at St Botolph's and to be subsequently officially sworn in by the Diocese. Being a Churchwarden at St Botolph's is a real privilege.

I came to St Botolph's nearly two years ago feeling a need to attach myself more deeply to the city. I have lived in Cambridge since 2010 (but I also lived here for two years between 1997-9.) I've been involved with various activities in the City, as a practising artist, a busy parent and I've also helped to found a firm of medical robotic engineers, through providing capital investment and numerous take away curries.

Cambridge is defined by its colleges but also by its numerous and splendid churches. The pulse of Anglicanism in Cambridge is strong and is perhaps best represented, at a parish level, by St. Botolph's itself.



Since my initial participation in worship, I've gone from complete puzzlement at words like 'doxology' to having some opinion on matters to do with the Trinity. (Maybe don't ask quite yet). I like the fact that St Botolph's is a Prayer Book church and that it strives to use the best strengths of Anglicanism. In recent weeks, I've come to really appreciate being able to sit in the choir stalls and read scripture while watching our visitors come and go.

I've just begun a course of studies with the Diocese called A Foundations for Ministry course. It will last about a year and through this course I hope to expand the ways I can contribute to our parish.

In the near future, I will endeavour to keep the church open as much as possible and to contribute to the various renovation projects currently being planned. I'm always open to discussion and suggestions.



David Berry

David has now arrived at Oxford for his Master's course. But in the past couple of weeks, I was able to secure a placement for him with Fr Roger Parker at St Catherine's Church, Burnley, which is in one of the most deprived areas of the country, so he could explore a possible vocation to the priesthood. The parish is adjacent to Turf Moor, home of Burnley FC.

The church is at the centre of the local community, with a hall attached, which serves as a drop-in centre, provider of meals and washing facilities, and an ever active base for a whole range of community based activities. Daily services in church inform and underpin all the Christian social outreach that takes place.



David writes of his experience:

As some of you will know, I recently spent two weeks in Burnley at St Catherine's Church with Fr Roger Parker as a formational experience to aid in the discernment of my vocation towards ordination. This was kindly and generously co-sponsored by St Botolph's: for which I am extremely grateful.

Whilst there I spent most of my time shadowing Fr Roger; doing house-visits (for as long as this remained permitted), and helping with some of the groups at their community centre.

The community centre is very active; particularly towards the vulnerable through providing food multiple times a week, it also houses several community groups and youth organisations.

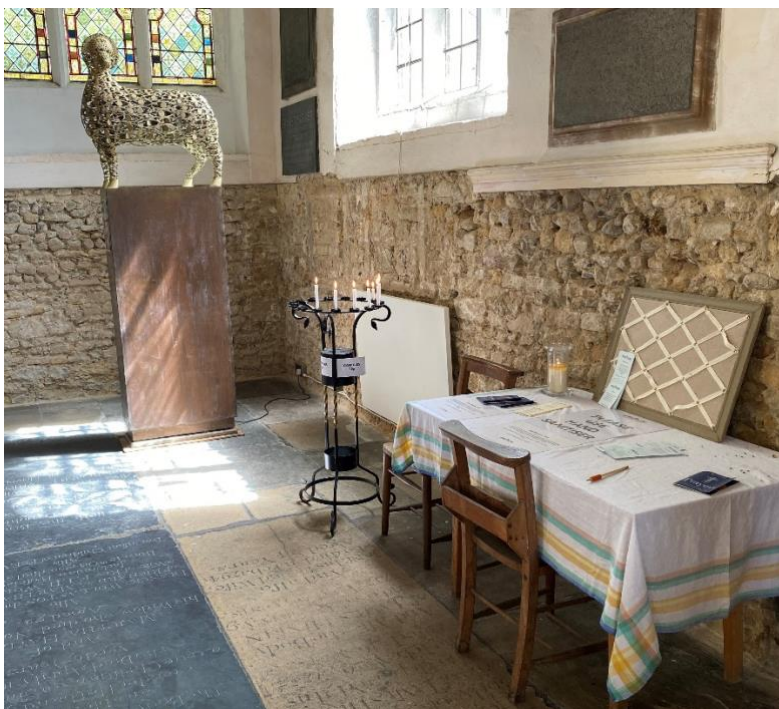
I was also able to spend some time with a couple of other local parish priests, a religious Sister and the Bishop.

The experience was a wonderful way to end my summer, and has provided a great deal of advice and insight, and much upon which to reflect and pray.

As I progress in life over the next few years, I am sure that it will provide a constant source of inspiration and fuel to grow in faith.

We wish David well at Oxford in all that he does. Our thoughts and prayers go with him. We hope it will be possible for him to be back for the Annual Meetings on 25th October.

DAC applications



The PCC has lodged three applications with the Diocesan Advisory Committee (DAC) as part of the Church's formal application process for planning consent which ends with the granting of a Faculty for work to proceed (if approved).

The applications are for us to retain the Lamb of God sculpture permanently (subject to fund raising); not to need to fully reinstate the south west wall now that it has dried out, but to leave it in its unrendered state, subject only to

stabilising the wall by applying a breathable sealant; and to erect a shed in the far corner of the garden for the storage of garden tools, so that the Outer Vestry / Parish Room can be considerably tidied up and made more usable.

The DAC visited St Botolph's on 27th August and agreed to support the Faculty applications to retain The Lamb of God sculpture (subject to funding) and the erection of a shed in the garden (subject to any local authority planning consent).

It did not however support retaining the South West wall in its current unrendered state. We are required to reinstate the wall back to its previous rendered condition, with dado rail. This means covering up again the outlines of an aumbry and a piscina etched into the wall and the separate delineation for this area occupying the former chapel of St James, which is rather regrettable. Subject to consent, it may be possible to limewash the area in a slightly different shade to the rest of the church.

We shall be putting all these various aspects of work in hand over the next few months.

Future Dates

Set out below is the pattern of Sunday services at 11am over the next month or so, together with the various preachers:

4th October – Sung Eucharist on Harvest Thanksgiving
Will Lyon Tupman preaching

11th October – Mattins with Holy Communion on Trinity 18.
Bp Dagmar Winter, Bishop of Huntingdon preaching

18th October – Sung Eucharist on St Luke the Evangelist
Fr Stephen preaching

25th October – Mattins with Holy Communion on Trinity 20. *No sermon today.*
Annual Meetings to elect Churchwardens and PCC and to receive reports on various activities follow

1st November – Sung Eucharist on All Saints Day.
Rev'd Margret Widdess preaching.



Monday 2nd November – **Commemoration of the Departed and Sung Eucharist on All Souls Day at 6:30pm.**

The Choir sings the Fauré Requiem liturgically *

8th November – Act of Remembrance and Sung Eucharist on **Remembrance Sunday at 10:55am**

Revd Dr Jonathan Holmes preaching

Please make a note of all these dates and what is happening on them in your diaries.

Yours in Christ,

Fr Stephen

Priest in Charge

Parish Church of St Botolph, Cambridge

* **The Choir:** During the past few months, despite the temporary loss of some choir members, due to Covid restrictions, we have gained new singers, and continue to enjoy welcoming them and others week by week. If you, or anyone you know, would like to join the choir, please contact Tim Brown on <tcb21@cam.ac.uk>